

Searching for Footage on a **selected date** without eMaps

1 Click the play button

2 Select (tick) your cameras

3 Click the Search button

4 Click 'Search selected date'

5 Select your date & time range

Tip: If you just wanted to search today's footage, click 'Search selected date'

Searching for Footage **using eMaps**

1 Click the play button

2 Select a date

3 Click the date

4 Click & drag eMap hyperlink to a video tile

Tip: If you do not select a date, 'Today's' date will be selected

Navigating to a time on the time line

Double click over time

02:00:00

Displays **current cursor position** & Clicking this indicator allows you to navigate to an exact time

Each horizontal bar represents a 24hr period from a different camera

Double click the area on the timeline under the time you wish to go to.

Use buttons to zoom deeper into timeline.

Example on left takes us to '2:00am' on the timeline on 'C09 Stairwell' camera

Viewing saved snapshots (pictures)

1 Click the play button

2 Click the Search button

3 Click 'View snapshots'

Reviewing **downloaded** footage using the 'Local Player'

1 Click the play button

2 Click the Search button

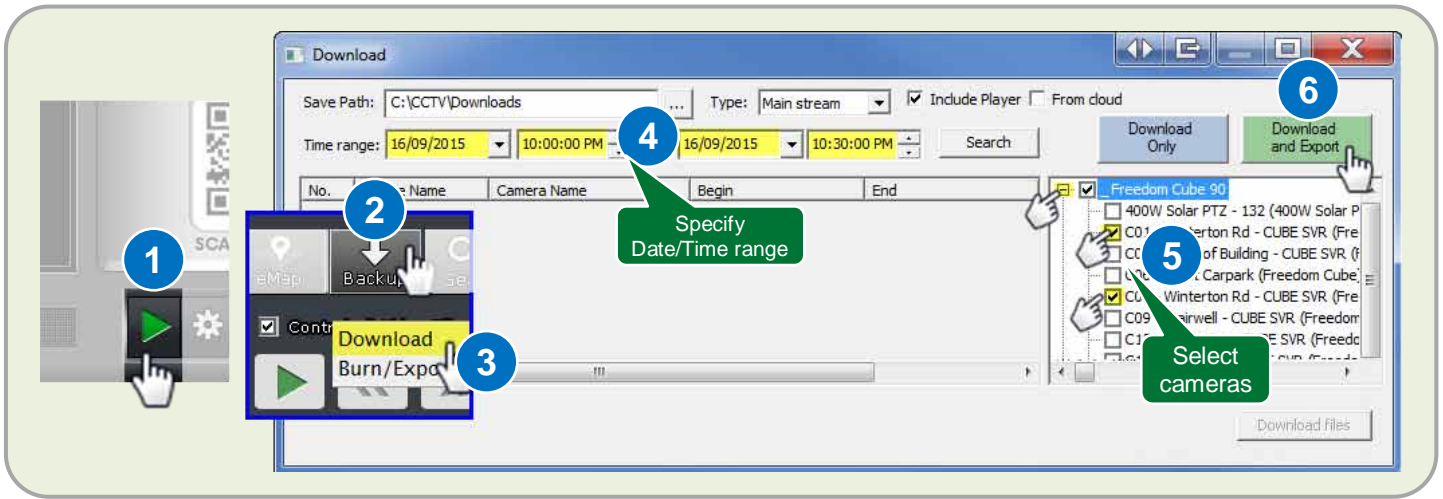
3 Click 'Play local video'

Backing up Footage - Visual Step by Step V3.4

Turn over page for Reviewing footage

Video tutorial at www.FreedomVMS.com/backup

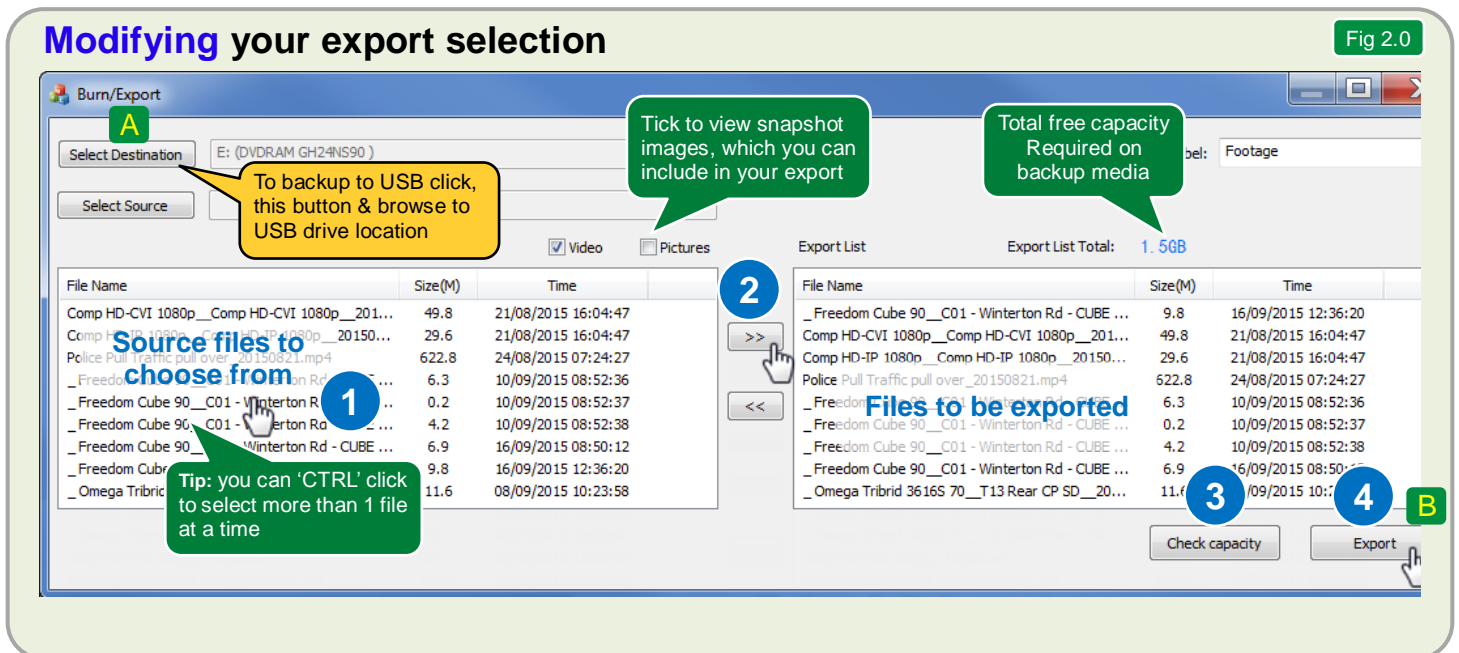
This guide outlines the backup process in Freedom VMS Version V3.4.1509/0/2, the media used for the backup can be CD/DVD or a USB device.



After the download phase has completed you will be prompted to begin the export phase and insert your backup media. If you are satisfied with your export selection click 'Yes' to proceed to export to CD/DVD.



Once the CD/DVD exporting process has completed, you will get a notification, after which you can exit the Burn/Export window and 'Download' window. For a guide on how to open and view footage from a backup media refer to the 'Local Player User Guide' at <http://www.freedomvms.com/player>



To add additional video files click (or CTRL-CLICK) to highlight each file from the left 'source files' list then click the add icon >>. If the 'Export list Total' size exceeds your selected media capacity, you need to remove files from the right 'Export list'. You do this by clicking each file you wish to remove and click the remove << icon. Once you are satisfied with your selection click the 'Export' button to proceed with your export.